

**Transportation for the Nation
(TFTN) Panel Discussion
– The FHWA Perspective**

GIS-T Symposium

Charleston, WV

April 13, 2010

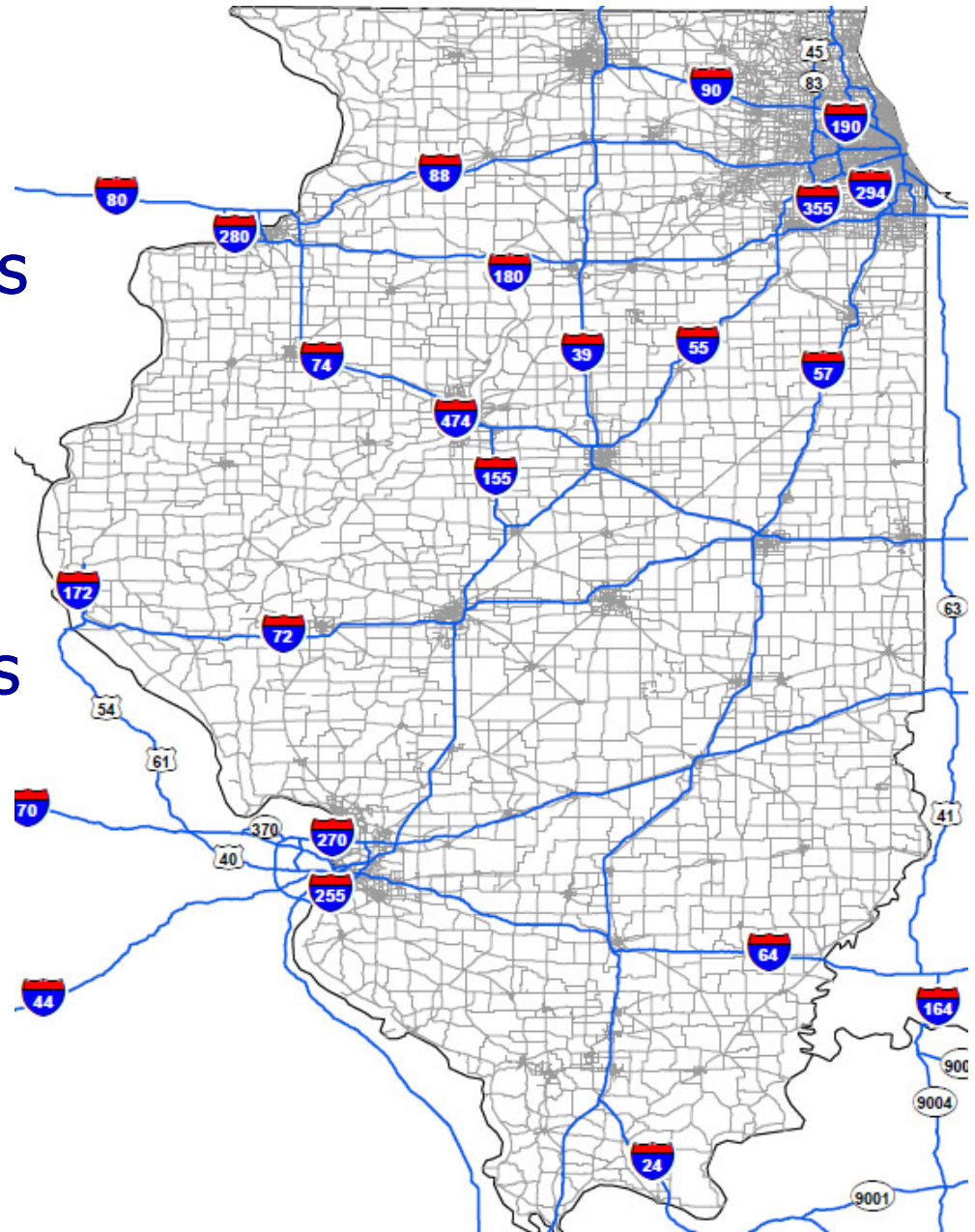
The Ideal TFTN Product

- A national transportation data source
- Surface transportation system attributes
- Should meet the needs of both public and private sector customers
 - The Army Corps of Engineers, Dept. of Defense, Census Bureau, etc.
 - Federal, State, and local government contractors (private-sector entities)



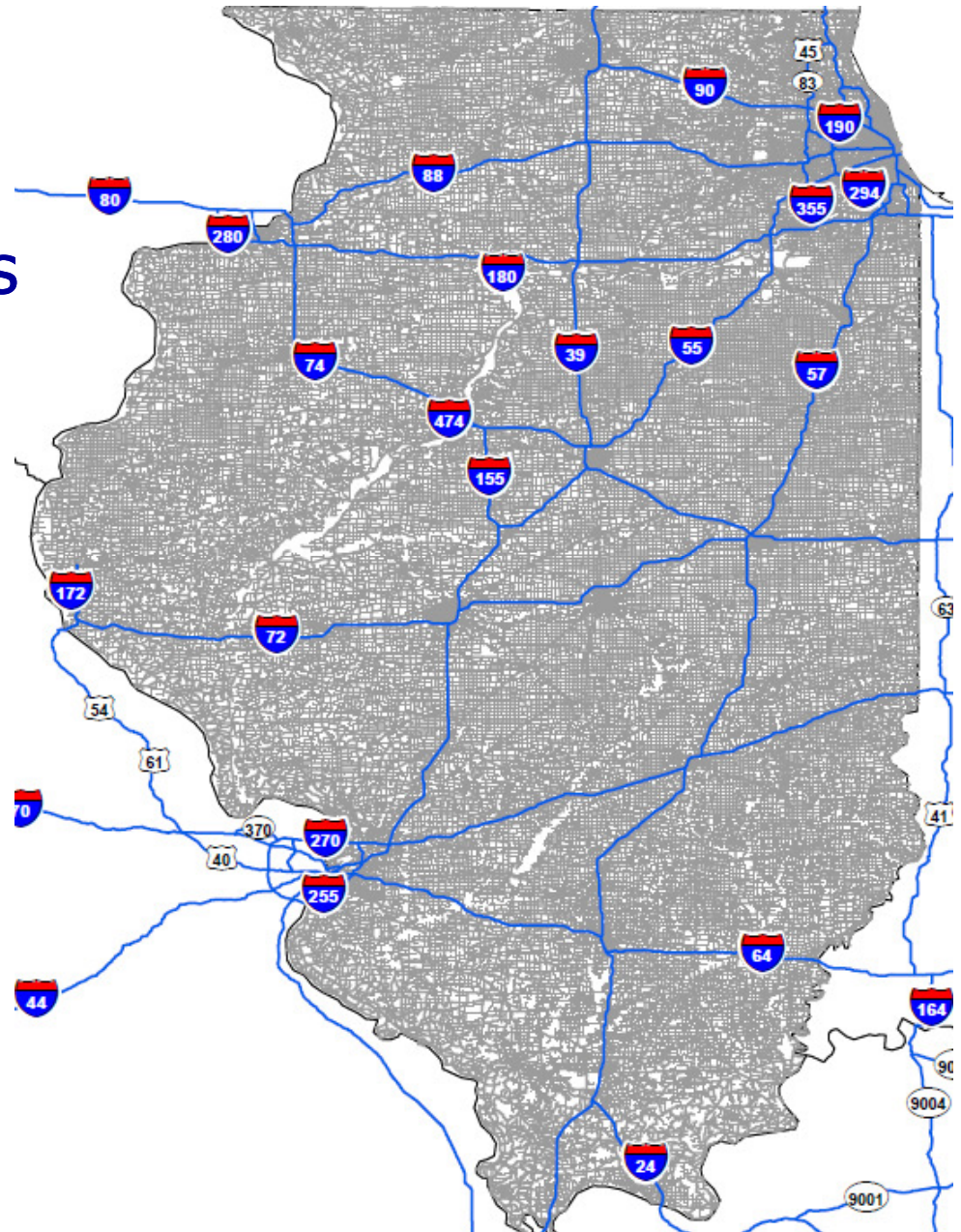
Coverage of Roads in HPMS

- Federal-aid Roads
 - Interstates
 - Freeways/Expressways
 - Principal Arterials
 - Minor Arterials
 - Major Collectors
 - Urban Minor Collectors
 - *National Highway System (NHS)*

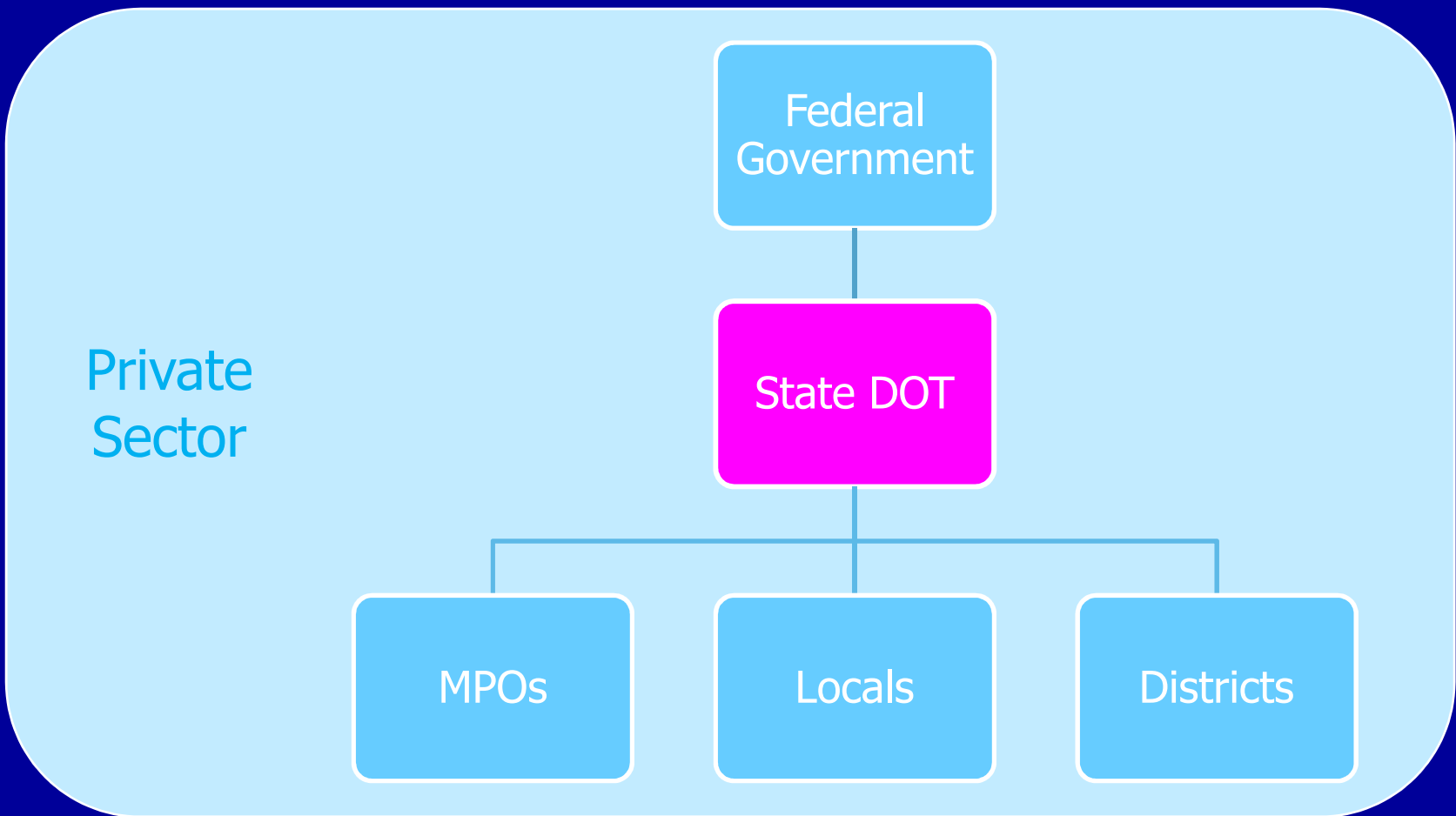


All Functional Systems

- Federal-aid Roads
 - Interstates
 - Freeways/Expressways
 - Principal Arterials
 - Minor Arterials
 - Major Collectors
 - Minor Collectors (All)
 - Locals
- *National Highway System (NHS)*



Sector Roles



Identifying Roadway Attributes – IRI Example

i Identify [?] [X]

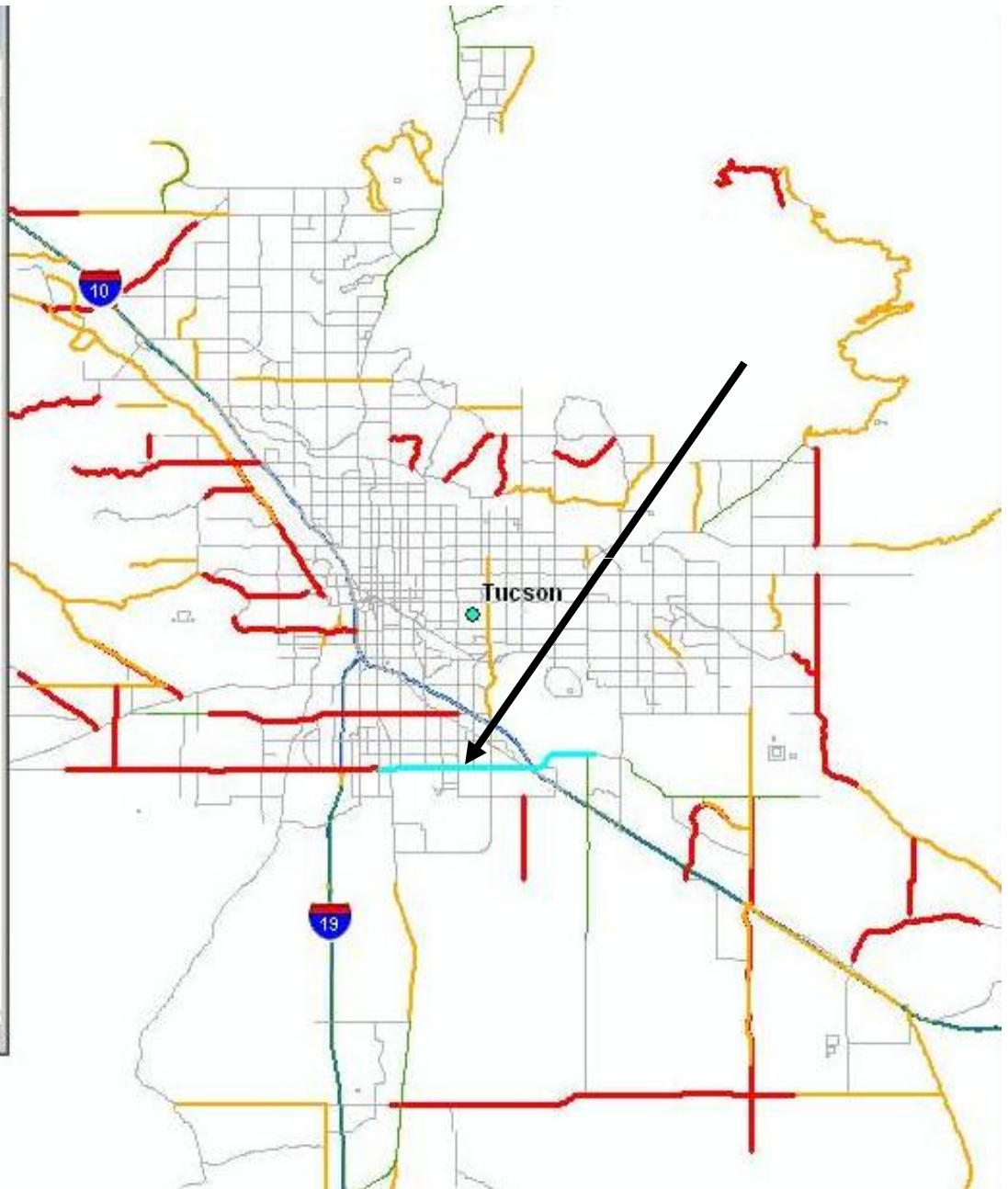
Identify from: <Top-most layer >

AZ_HMPS08
10C020832097

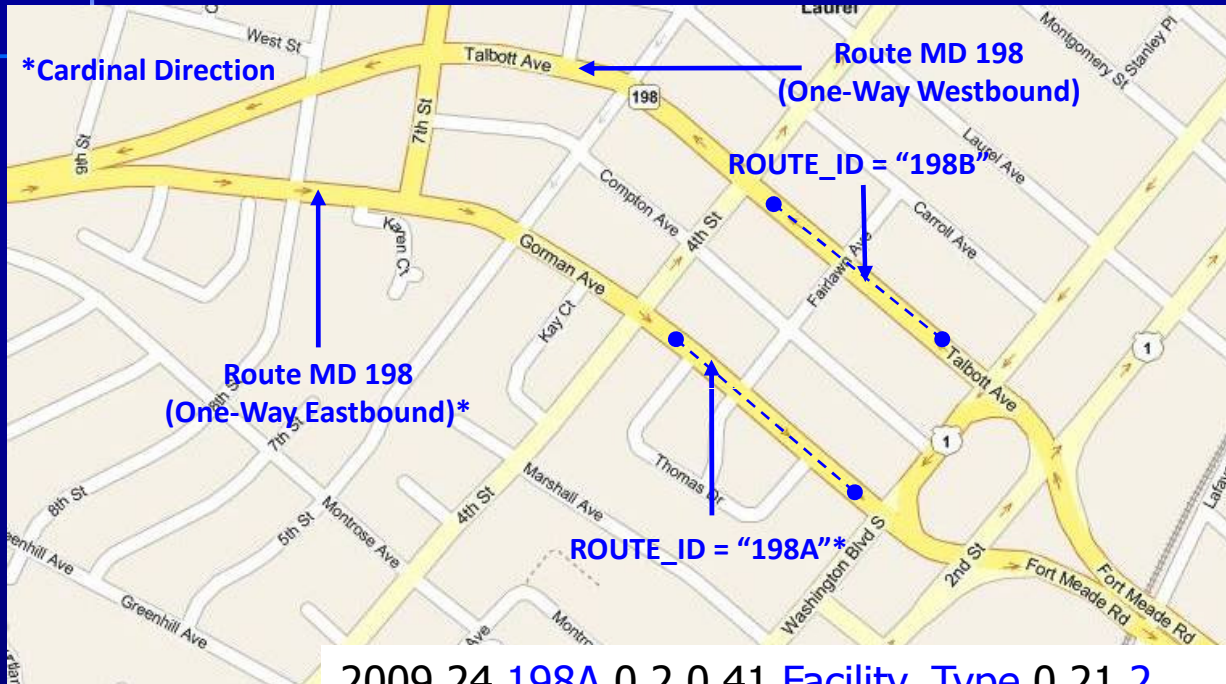
Location: -110.916022 32.135567 []

Field	Value
ROUTE_QUAL	0
ROUTE_NUMB	00000000
OWNERSHIP	2
SPECIAL_SY	0
TYPE_FACIL	2
TRUCK_ROUT	0
TOLL	0
SECTION_LE	2.01
DONUT_VOLL	0
STD_VOLUME	6
AADT	24609
THROUGH LA	2
IRI	173
PSR	3.1
HOV	0
SURV_A	0
SURV_B	0
SURV_C	0
SURV_D	0
SURV_E	0
SURV_F	0
SURV_G	0
SURV_H	0
SURV_I	0
SAMPLE_ID	
DONUT_EXP_	0
STD_EXP_FA	0
PAVEMENT_T	0

Identified 1 feature



Specifying Attributes for a "Couplet" in HPMS

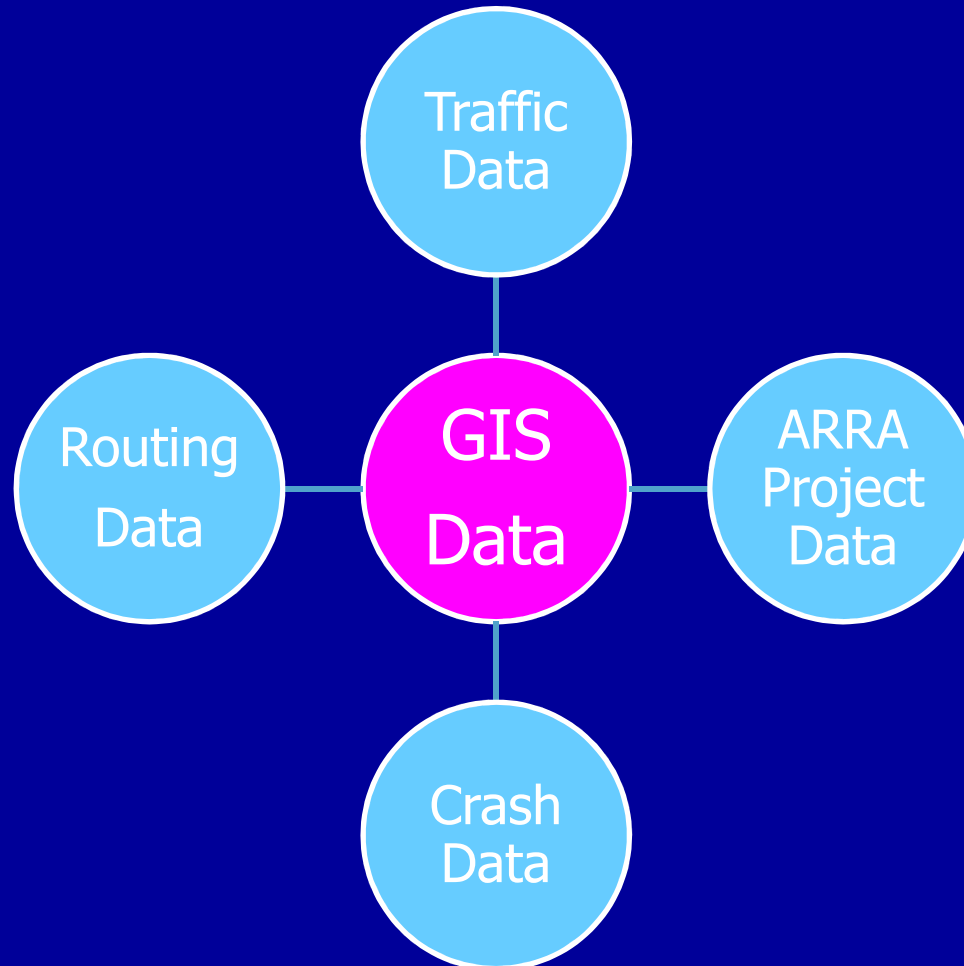


Section data must be reported for **BOTH** sides of a couplet.

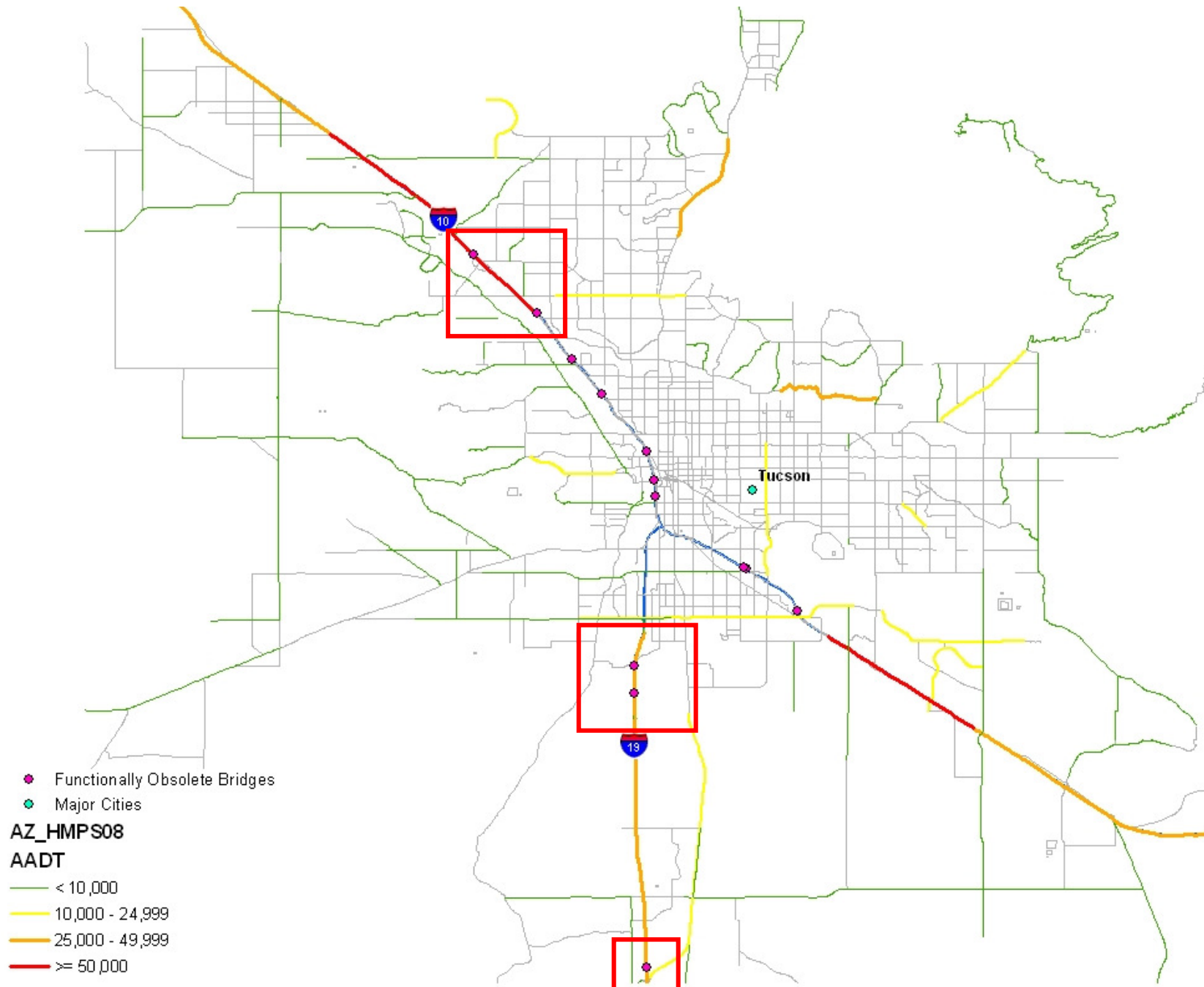
```
2009,24,198A,0.2,0.41, Facility_Type,0.21,2,,,
2009,24,198B,0.2,0.41, Facility_Type,0.21,3,,,
2009,24,198A,0.2,0.41, AADT,0.21,10000, Factored '07 AADT,,
2009,24,198B,0.2,0.41, AADT,0.21,8000, Factored '07 AADT,,
2009,24,198A,0.2,0.41, Through_Lanes,0.21,3,,,
2009,24,198B,0.2,0.41, Through_Lanes,0.21,2,,,
```



Enterprise System Approach



Identifying Sections with Functionally Obsolete Bridges and AADT \geq 25K



Possible Program Roles

- Highway Performance Monitoring System
 - Supply HPMS network and attributes
 - Work to resolve data structure conflict between NHPN and HPMS networks
- Enhanced 911 (e911) Community
 - Coordinate with State DOTs to help ensure that data incorporates addressing and routing components



Potential Program Roles (cont'd)

- Other Federal Programs
 - Ensure cohesive approach amongst all agencies via reporting requirements
 - Work with the States to foster an Enterprise System approach to data management
 - Assist the States with their data collection efforts where possible



Thank You!



Contact Information

- Ronald Vaughn

FHWA / Office of Highway Policy Information

Office: (202) 366-9248

Email: ronald.vaughn@dot.gov

- Tom Roff

FHWA / Office of Highway Policy Information

Office: (202) 366-5035

Email: thomas.roff@dot.gov

