

# FY12-13 Annual IT Survey

## AASHTO Subcommittee on Information Systems Annual Meeting

Boise, ID

May 2013



# Status

This survey was conducted

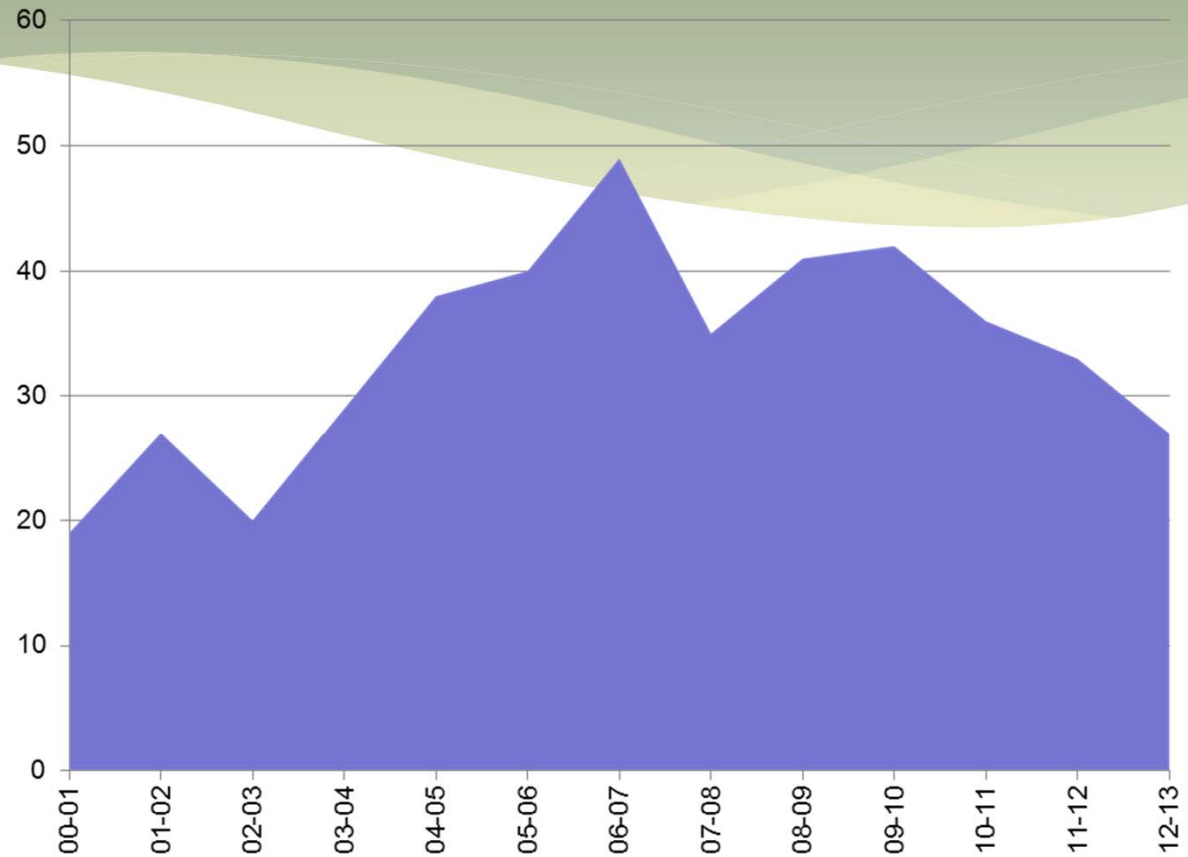
September 12, 2012 - December 17, 2012



# History of Responses

Number of Responses

FY00-01 = 19
FY01-02 = 27
FY02-03 = 20
FY03-04 = 29
FY04-05 = 38
FY05-06 = 40
FY06-07 = 49
FY07-08 = 35
FY08-09 = 41
FY09-10 = 42
FY10-11 = 36
FY11-12 = 33
FY12-13 = 27



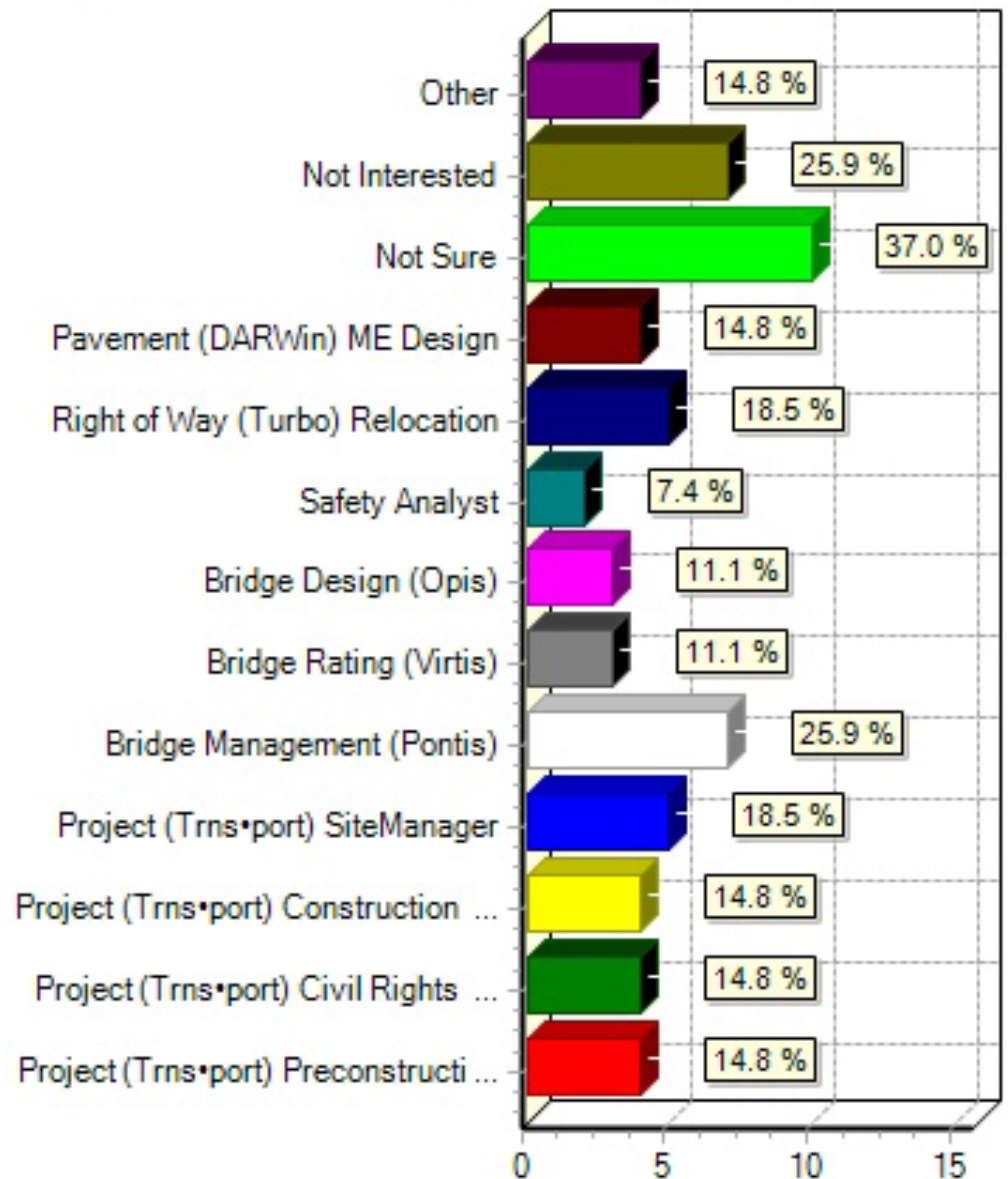
# Top Agency IT Projects

- Asset Management
- Permitting and Routing
- Motor Vehicle Licensing
- Document Management
- Construction Management
- Legacy Application Modernization
- Geographic Information System Applications
- Project Management
- AASHTOWare Implementation



# Hosting

Which of the following products would your agency be interested in using in an AASHTOWare hosted environment?

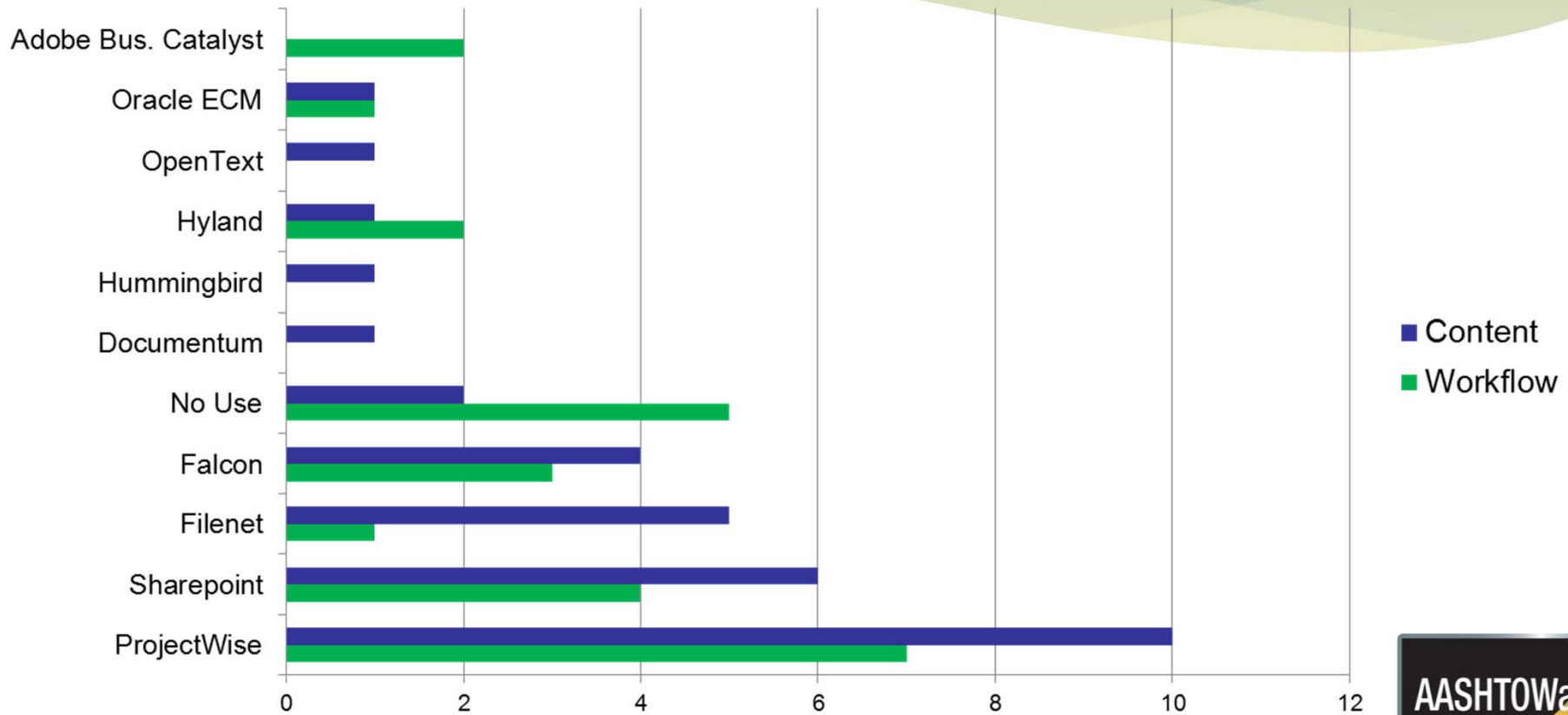


# New / Emerging Technologies

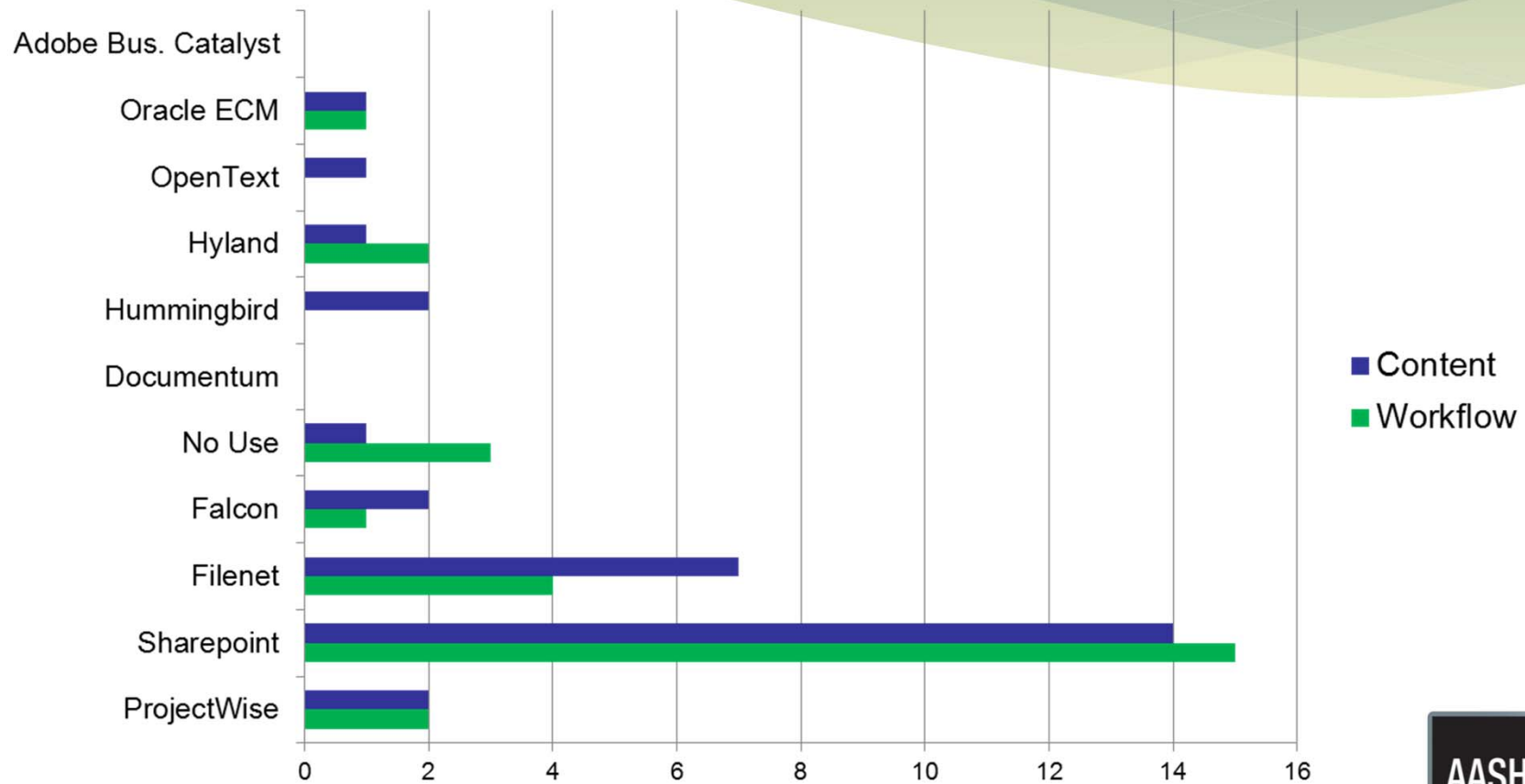
- Overwhelmingly mobile devices
- Increased use of cloud computing
- Social networking
- Server & desktop virtualization
- BYOD
- Document management



# Engineering Document Management



# Business Document Management





# What Social Media is used?

1. Twitter

2. Facebook

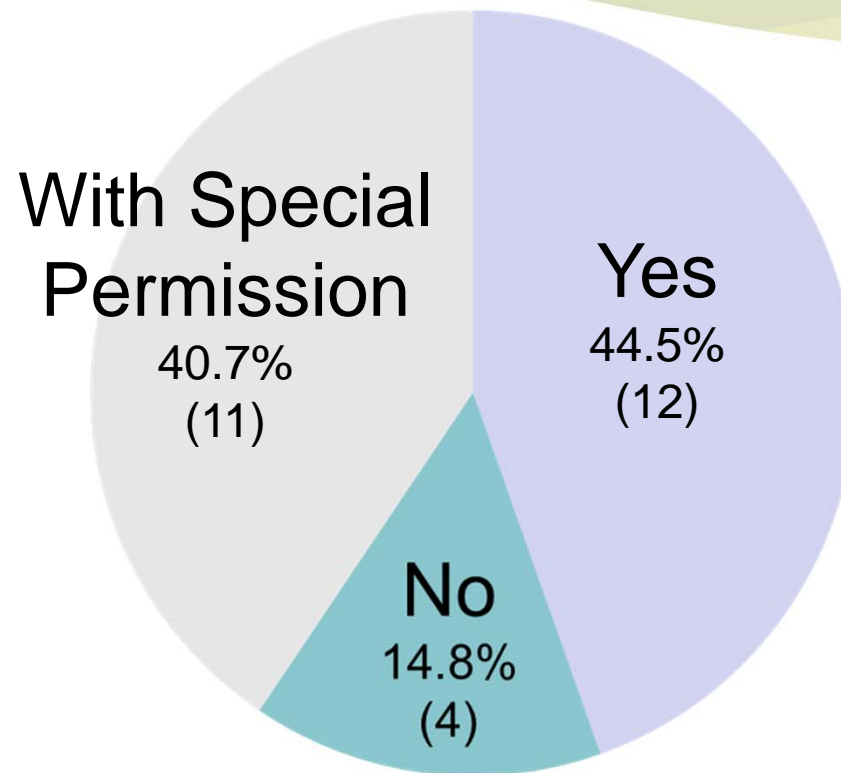
3. Youtube

Flickr, MySpace, RSS, Google +,  
Linkedin, Pinterest, Blogspot,  
GovDelivery

Road Condition and Press Releases

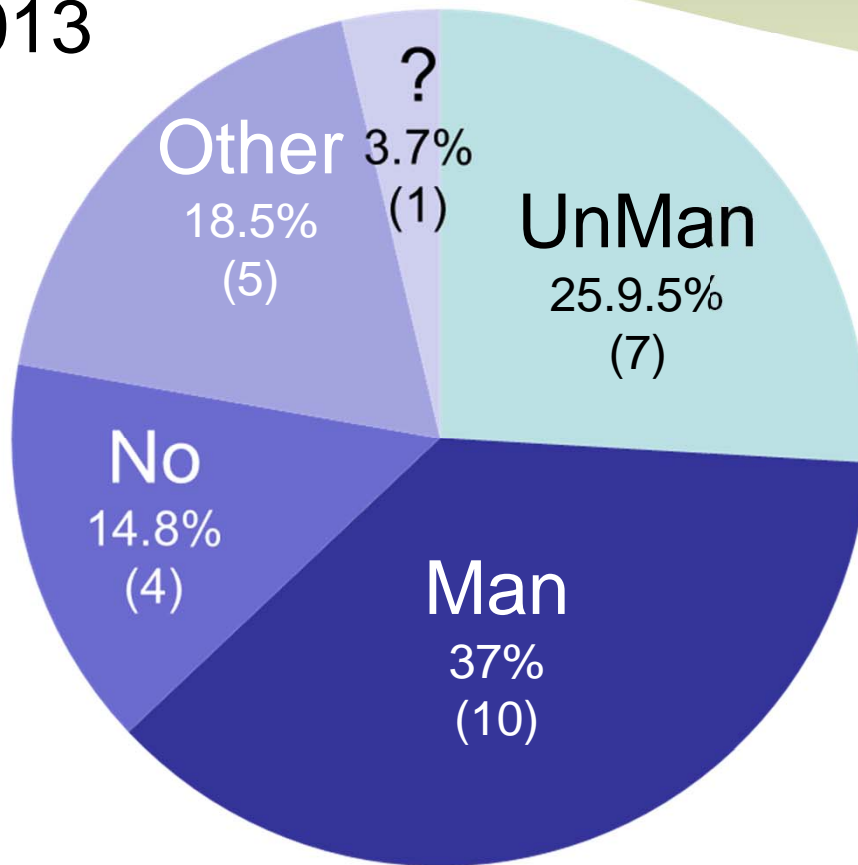


# Employee Access to Social Media Sites?

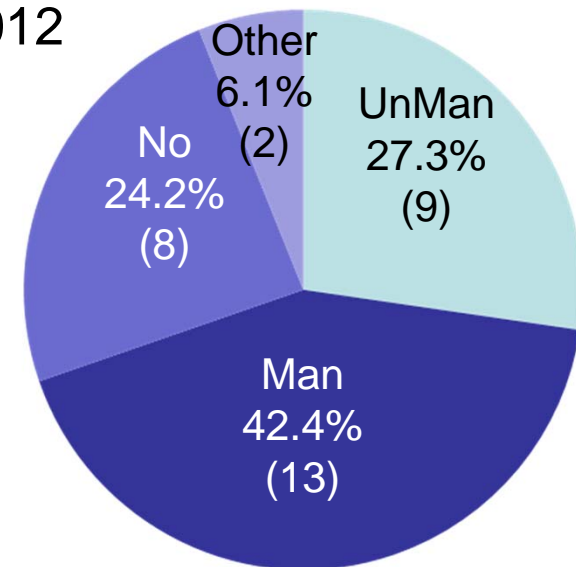


# Personal Devices to eMail or Applications?

2013



2012



# Any plans to Integrate Social Media with Applications?

- Most have no plans
- RoadInfo application (2 years out)
- Twitter with mobile apps
- Complaint tracking system
- Twitter with TripCheck (road condition)



# Top 5 Candidates for Mobile Software

- Field inspection (Bridge, Culverts, Construction)
- Asset inventory collection
- Maintenance/operations activities
- Construction management
- Snow plow management



# What Mobile Applications are Being Developed?

- QuickMap traveler information – HTML5
- Service desk (IT tech) - android & apple
- Inventory capture
- TAPS construction data – apple
- Materials and testing – android & apple
- Maintenance activities - android & apple
- Safety data collection



# What Mobile Applications are Being Developed?

- Rail Crossing, Encroachment Permits & other pilots (ESRI) – Windows Mobile on Trimble Juno
- Const. Inspect. (CarryMap) - apple
- Signs Inventory (AgileAssets & ESRI) – Windows Mobile on Motorola MC75
- Pavement Eval. (ESRI) - apple



# What External Mobile Apps are Being Developed?

- Traveler Information Systems
- Citizen Condition Reporting
- Airport Information System
- Motor Vehicle offices & wait times
- Legislative Information System

All for Apple and Android





# Internal Vs. External Mobile?

## Internal

- Apple
- Android
- Apple & Android
- Windows Mobile & Apple

## External

- Apple & Android



# Multiple Mobile Platform Development?

- HTML5
- Adobe - Flash Builder & Creative Cloud
- JavaScript - DoJo, jQuery, ArcGIS API
- C++ & Java



# Use of Cloud Computing or Software of a Service?

- Email
- Office 365
- Gmail, Gcal & Gdocs
- ArcGIS online
- 511 System
- Rail Inventory
- Agile Assets
- SAP/ERP



# Best of Breed?

- DOTD - Bidders Registration
- CA - QuickMap traveler information
- MiBridge
- Roadway Features Inventory & Maintenance Management System
- Complaint/Issues Tracking System
- Transportation Management System
- OR – Trucking Online
- Integrated Transp. Mgmt. Syst.



# AASHTOWare Improvements

- Web based Construction Management System
- Provide Asset Management Software
- BAMS/DSS not require SAS software
- Improvements in bridge inspection functionality
- Better integration of applications
- Quicker software development/delivery
- Better spatial awareness tying information to real world coordinates and not just LRS
- Mobile products
- Cloud based products



# Questions

We need your ideas for next year's survey

