



AASHTOWare Program Update

Subcommittee on Information Systems Business Meeting

May 7, 2013

Mike Bousliman

Administrator, Information Services

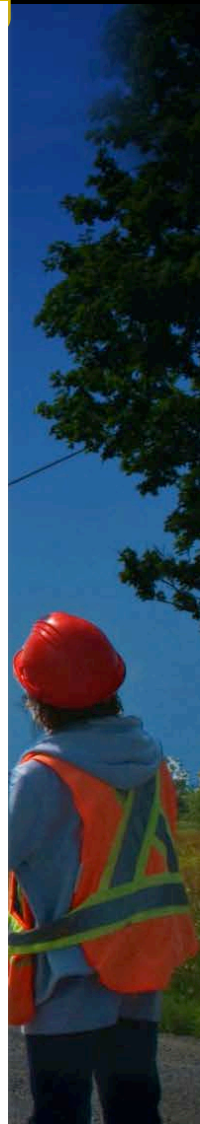
Montana DOT

Vice Chair, Special Committee on Joint Development



AASHTOWare Program Approach

Our vision is to give our members the best possible enterprise software for the most efficient management of their design and construction activities. Our unique philosophy of using DOT subject matter experts to design and continually improve the software we deliver gives us an edge that no other software developer can match.





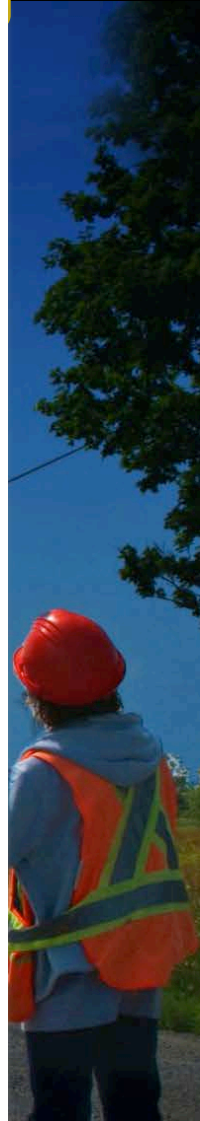
Key Benefits

- **Pooled Resources**
Great economies of scale by sharing financial and human resources
- **AASHTO-Administered contracts**
Services 100% out-sourced; AASHTO administers contracts with consultants for maintenance, support and enhancements; funded through annual fees; program fully self-supported
- **Software built by DOTs for DOTs**
User led and managed through Task Forces and active product User Groups
- **Standardized software, ready-to-use, yet with customizable features**
Based on AASHTO Standards and best practices with a goal of meeting common agency needs
- **Software kept current with technology and functional requirements**



Major New Directions

- Re-Branding
- Pontis 5.2 project
- Web-enabled applications
- Option for hosted applications





Rebranding Initiative

greenfield belser
MAKE YOUR FIRM UNIQUE

LEVEL 1
MASTER BRAND



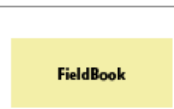
LEVEL 2
SOFTWARE BRANDS



LEVEL 3
SOFTWARE MODULES



LEVEL 4
SUITE COMPONENTS



LEVEL 1
MASTER
BRAND



LEVEL 2
SOFTWARE
BRANDS



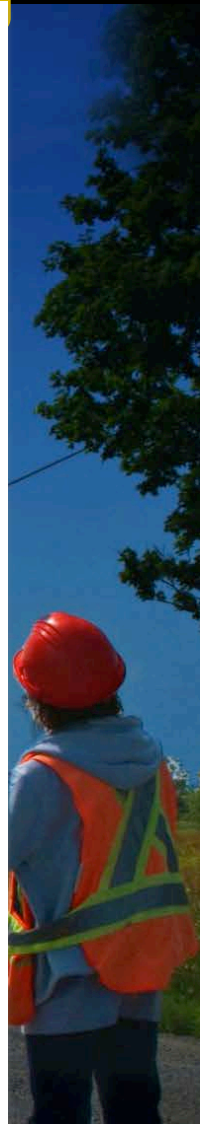
LEVEL 3
SOFTWARE
PRODUCTS





AASHTOWare Bridge Management 5.2 Solicitation

- 23 DOTs committed to development effort (combined funding \$4,884,588)
 - Alabama, California, Connecticut, Florida, Hawaii, Idaho, Iowa, Illinois, Kentucky, Louisiana, Michigan, Minnesota, Mississippi, New Mexico, New York, North Dakota, Oklahoma, Oregon, South Dakota, Texas, Virginia, Wisconsin, and Wyoming.
- DOTs not committed are encouraged to join this worthwhile development effort.



AASHTOWare Bridge Management (Pontis 5.2) Project

3 Development Phases

- **Phase I:** Risk Assessments, integrated utility functions, and updated inspection methodology – April 2013, release 5.1.2 and 5.1.3
- **Phase II:** Implementation of improved deterioration models and Multi-Objective Analysis – May 2014, release 5.2.2
- **Phase III:** Full completion - including integrated project planning and all administrative features – January 2015, release 5.2.3

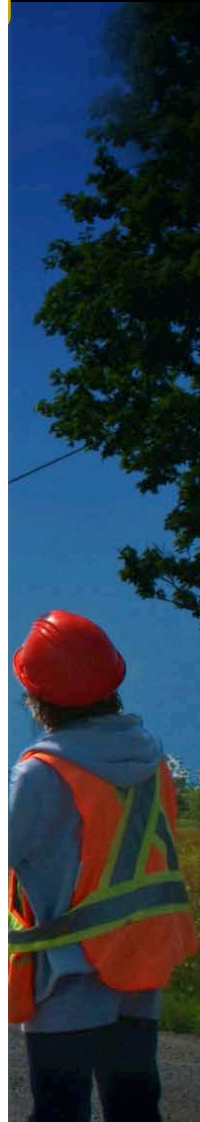


Upcoming AASHTOWare Bridge Design and Rating Releases

AASHTOWare Bridge Design-Rating (BrDR), formerly Opis/Virtis – June 2013

Multiple functional enhancements:

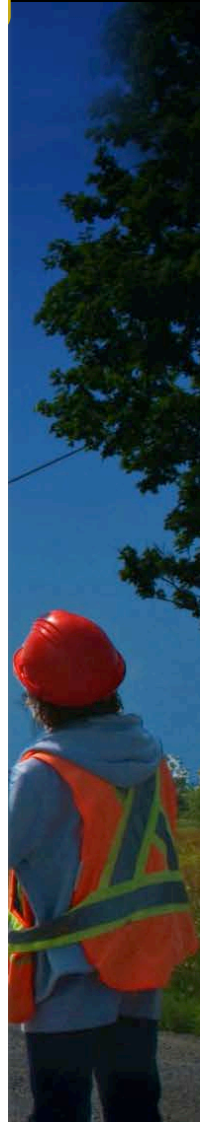
- Curved steel multi-girder design review and rating
- Reinforced concrete slab system design review and rating
- Capacity override enhancement
- Non-standard gauge LRFR analysis
- Post-tensioned multi-cell box beam rating and design review
- Reinforced concrete multi-cell box beam rating and design review





Web-based AASHTOWare Project (formerly Trns•port)

- Preconstruction - available
- Civil Rights & Labor - available
- Construction & Materials – December 2014
- Estimation – December 2014
- Electronic Bidding and Decision Support -- Requirements definition phase





AASHTOWare Pavement ME Design Software

- Software tool to implement mechanistic-empirical pavement designs
- Developing APIs for add-on models by third parties
- New no cost educational license
- SI version available for international agencies and firms. Contractor, ARA, handles international licensing
- Series of 10 webinars on the use of Pavement ME Design available for viewing on the AASHTOWare Pavement ME Design web site (<http://www.aashtoware.org/Pavement/Pages/Training.aspx>)



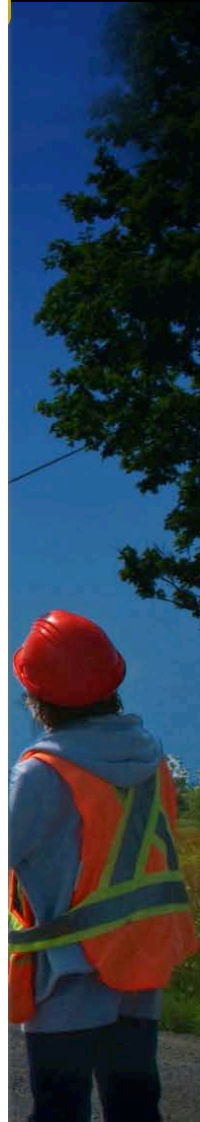
AASHTOWare Environment Electronic NEPA Collaboration Tool (eNEPA)

- Real-time, web-based collaboration tool
- Allows state DOTs to share documents, track comments, schedule tasks with resource agencies (EPA, FHWA and Army Corps), and perform concurrent reviews for Environmental Impact Statements (EIS) and Environmental Assessment (EA) projects
- Developed by FHWA with input from AASHTO
- Five states piloting - Arizona, North Dakota, Utah, Washington and Wisconsin
- FHWA in discussions with AASHTO to transfer ownership
- Transition expected - end of CY 2013



AASHTOWare Right of Way Outdoor Advertising System

- Mississippi DOT developed web-based Outdoor Advertising (ODA) System for tracking billboards
- AASHTO looking into feasibility of providing to other DOTs as cloud-hosted application
- Next Steps:
 - Conducting 2 webinars to show functionality
 - Poll AASHTO Subcommittee on Right-of-Way and Utilities and Subcommittee on Maintenance seeking nominations for task force members
 - RFP for support and maintenance contractor





AASHTOWare Right of Way Relocation Software

- Automates determination, calculation, and process of relocation assistance in accordance with the Uniform Act
- Provides internal links to regulations in the Uniform Act
- Web-based
- Easily integrated into existing ROW management systems
- Automatically generates completed forms from templates
- Includes 3 Mortgage Interest differential payment calculators

Questions / Discussion



Need More Information?

Contact:

Jan Edwards, Project Director

jedwards@ashto.org

202-624-8599

Website:

www.ashtoware.org