

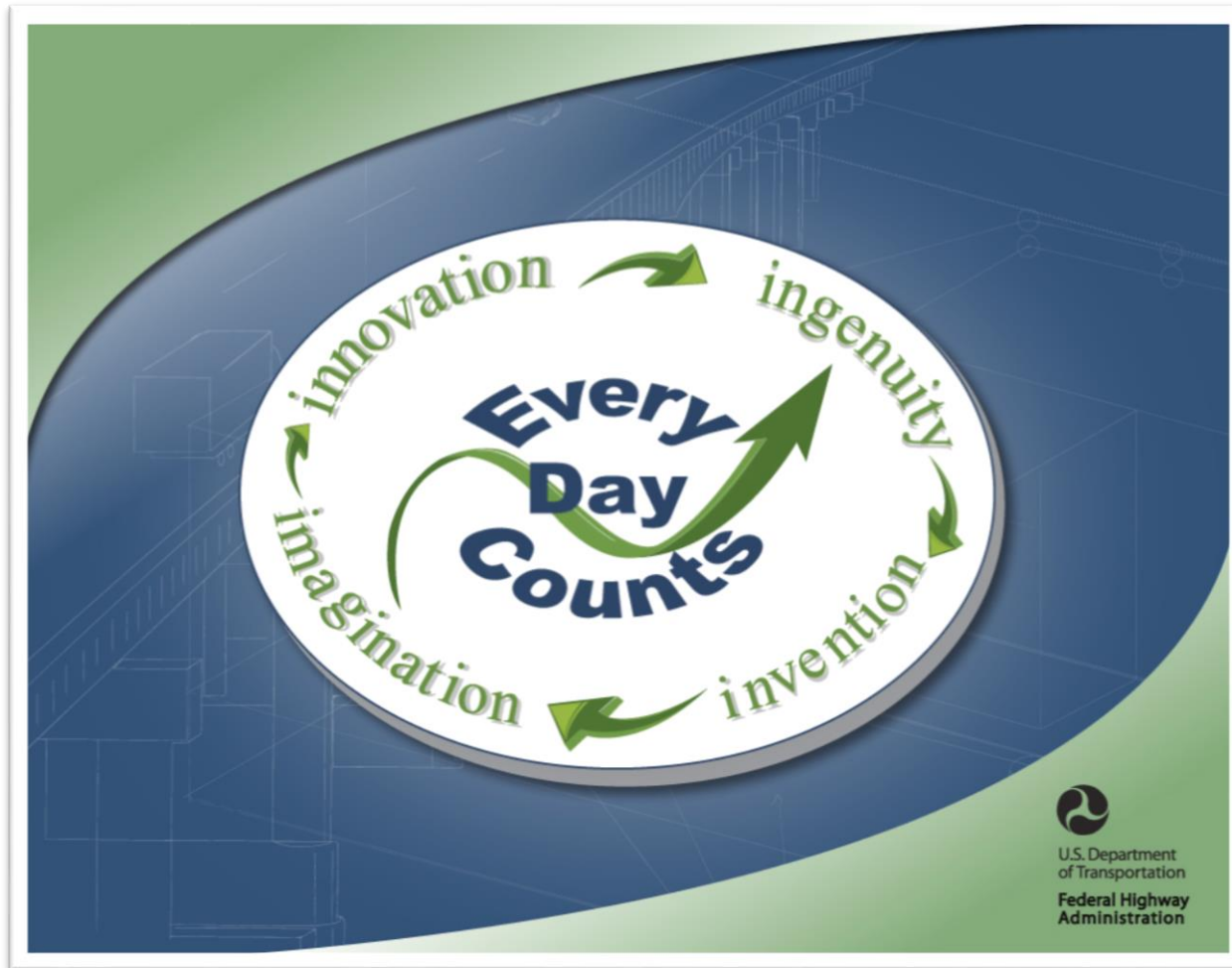
FHWA's Every Day Counts 2 Geospatial Initiative

AASHTO GIS-T Symposium

Burlington, Vermont

May 7, 2014

What is Every Day Counts?



<http://www.fhwa.dot.gov/everydaycounts>

What is Every Day Counts (EDC)?

- ▶ Identify and deploy innovation aimed at shortening project delivery
- ▶ Enhance safety of roadways
- ▶ Improve environmental sustainability



What is EDC 2?

- ▶ 2nd Round of initiatives
- ▶ Not about inventing the next “Big Thing”
- ▶ Taking effective, proven and market-ready technologies and getting them into widespread use
- ▶ Improve safety
- ▶ Reduce congestion
- ▶ Keep America moving and competitive



What is Geospatial Data Collaboration (GDC)?

- ▶ One of several EDC 2 Innovations
 - ▶ <http://www.fhwa.dot.gov/accelerating/edc2.cfm>
- ▶ Use and share
 - ▶ Geospatial data to provide information
 - ▶ Geospatial tools to make efficient transportation decisions
- ▶ State DOTs and partner agencies working better together



GDC can answer...

What can we do?



Collaborative GIS
Screening Tools

What data do
we have?



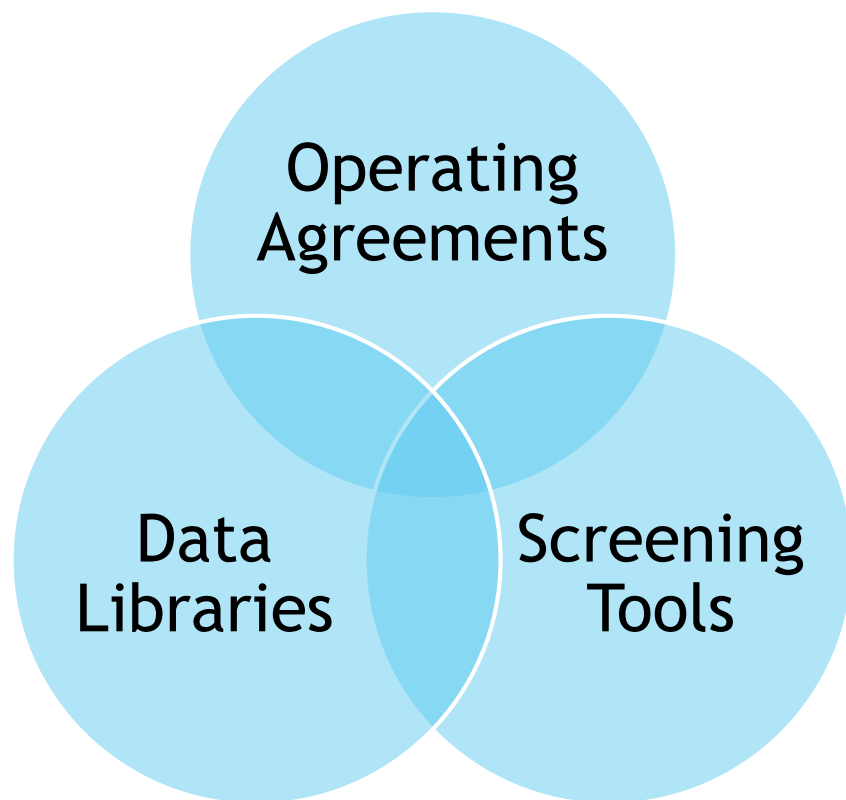
Collaborative
Data Libraries

How can we
work together?



Operating
Agreements

Components of GDC



Collaborative GIS Screening Tools

- ▶ Screen out transportation projects that will not work
- ▶ Bring related datasets together into a common view
- ▶ Identify potential impacts earlier in the project delivery process



Collaborative Data Libraries

- ▶ Collection of geospatial data needed to make transportation decisions
- ▶ Different names
 - ▶ Data warehouse
 - ▶ Data storehouse
- ▶ Located in “one” place
 - ▶ Physical - on a computer server
 - ▶ Abstract - web-based geospatial services



Operating Agreements

- ▶ Agreements to share geospatial data/tools
 - ▶ Formal (MOUs)
 - ▶ Start informal but evolve into formal agreements
 - ▶ *How are you going to share geospatial data and tools?*
- ▶ Agreements facilitated by geospatial data/tools
 - ▶ Environmental Streamlining (NEPA)
 - ▶ Planning and Environment Linkages
 - ▶ Safety
 - ▶ Performance Measures
 - ▶ *How can you augment agreements for working better together with geospatial data and tools?*

GDC Outreach Activities

- ▶ 2 Virtual Summits (Webinars) - Spring 2013
 - ▶ Introduce GDC idea
 - ▶ Identify GDC participants
- ▶ Reference website - <http://gis.fhwa.dot.gov/gdc.asp>
- ▶ Webinars / Newsletter articles highlighting GDC examples



Initial GDC Examples

- ▶ Florida
 - ▶ Efficient Transportation Decision Making Process (ETDM),
 - ▶ Environmental Screening Tool (EST)
- ▶ Utah - UPlan
- ▶ Pennsylvania - Linking Planning and NEPA Screening Tool
- ▶ South Carolina - Project Screening Tool



EDC 2 & GDC

- ▶ Unlike other EDC 2 Innovations many State DOTs were already familiar with geospatial data, GIS, and other geospatial technologies.
- ▶ Focus of GDC Outreach evolved from marketing GDC to facilitating peer-to-peer exchanges of noteworthy practices of using geospatial data and tools
 - ▶ Highlight the good work already being done
 - ▶ Share with others interested in doing better



Current GDC Activities

- ▶ Technical Briefs
- ▶ Peer Exchanges
- ▶ Case Study / Peer Exchange Summary Reports



Technical Briefs

- ▶ Summaries of GDC-related transportation agency application or effort
- ▶ “1” - page = one example
- ▶ Information obtained through phone & e-mail interviews



Tech Brief Examples (State DOTs)

- ▶ Arizona
- ▶ Colorado
- ▶ Connecticut
- ▶ Delaware
- ▶ Georgia
- ▶ Louisiana
- ▶ Maryland
- ▶ Missouri
- ▶ Montana
- ▶ North Carolina
- ▶ North Dakota
- ▶ Nebraska
- ▶ New Hampshire*
- ▶ Nevada
- ▶ New York State
- ▶ Ohio
- ▶ Pennsylvania
- ▶ Rhode Island
- ▶ South Carolina
- ▶ Virginia
- ▶ Wisconsin
- ▶ West Virginia

* - New Hampshire Audubon Society

Geospatial Data Sharing Peer Exchanges

- ▶ 1 ½ day long
- ▶ Bring together Tech Brief interviewees to share knowledge and experiences implementing geospatial data and tools
- ▶ Highlight implementation issues and successes
- ▶ Participants
 - ▶ Make presentation on their application or effort
 - ▶ Discuss geospatial topics of interest in roundtable sessions



Geospatial Data Sharing Peer Exchange #1

- ▶ May 20 - 21, 2014, hosted by North Carolina DOT, Raleigh, NC
 - ▶ Participants from
 - ▶ Maryland
 - ▶ Missouri
 - ▶ New York State
 - ▶ North Carolina
 - ▶ Pennsylvania
 - ▶ South Carolina
 - ▶ West Virginia



Geospatial Data Sharing Peer Exchange #2

- ▶ May 28 - 29, 2014, hosted by Colorado DOT, Denver, CO
 - ▶ Participants from
 - ▶ Arizona
 - ▶ Colorado
 - ▶ Connecticut
 - ▶ Montana
 - ▶ Nevada
 - ▶ North Dakota
 - ▶ Washington State

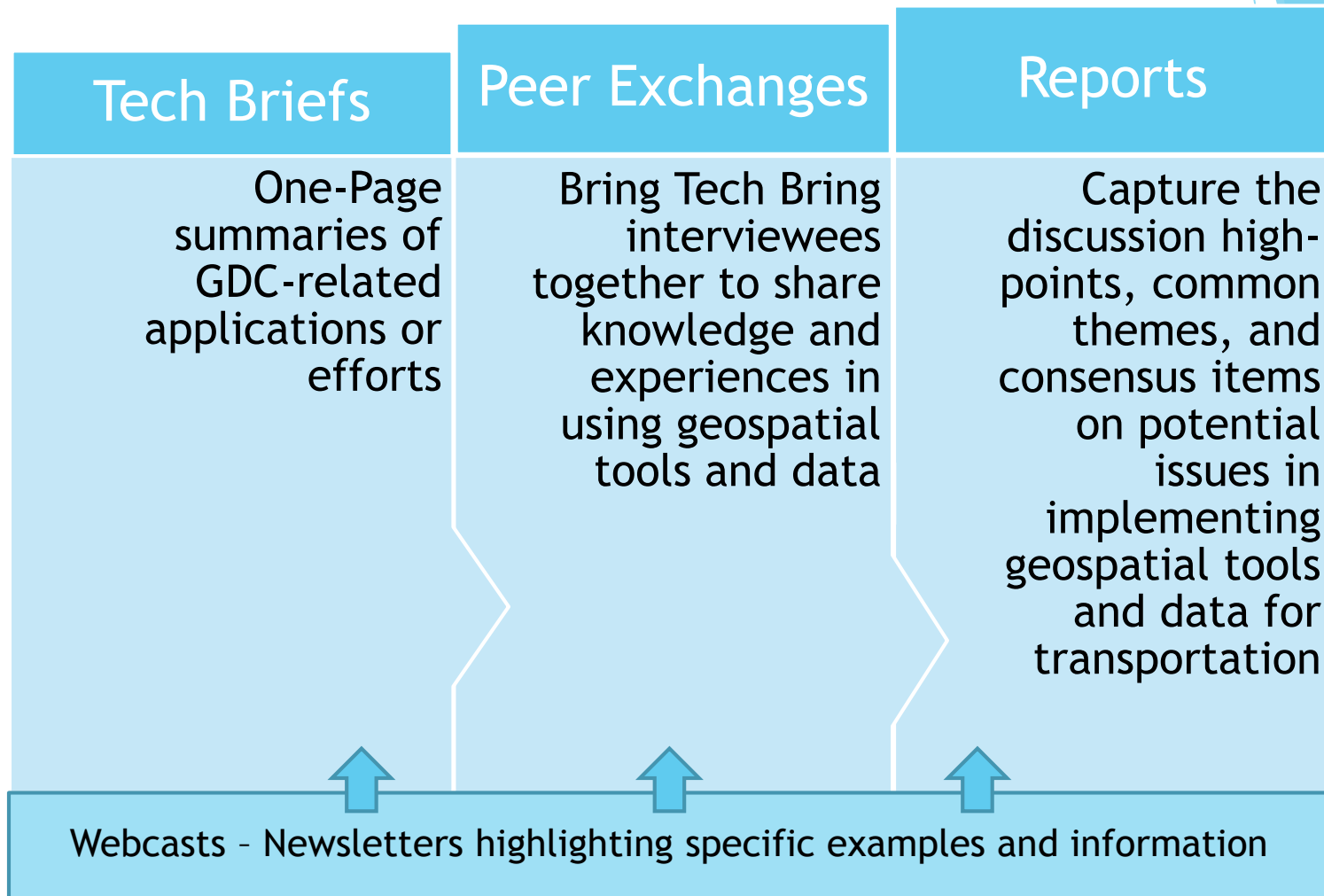


Case Study / Peer Exchange Summary Reports

- ▶ Combine Tech Briefs with summary reports of Peer Exchanges
- ▶ Report on lessons learned and issues encountered
- ▶ Identify common themes
- ▶ Make available on FHWA GIS in Transportation Website:
<http://gis.fhwa.dot.gov>



Current GDC Activities



Summary & Contact Info

- ▶ FHWA believes that geospatial data and tools can make more efficient the delivery of transportation projects
- ▶ State DOTs are already realizing some benefits to doing this, but there is more that can be done
- ▶ Websites:
 - ▶ GDC - <http://gis.fhwa.dot.gov/gdc.asp>
 - ▶ GIS in Transportation - <http://gis.fhwa.dot.gov>
- ▶ Contact Mark Sarmiento (mark.sarmiento@dot.gov)

