

BTS Office of Geographic Information Systems (OGIS) National Transportation Atlas Database

GIS-T 2012
April 17, 2012

Mark Bradford

National Transportation Atlas Database

- Database?
- Comprised of 32 different databases from over a half dozen agencies
- Not just one but a collection of data sets with transportation theme
- BTS does not own them
- Not all transportation

National Transportation Atlas Database

- Title 49 USC 111 – 7(f)(1) Congressional Legislation gives BTS responsibility to produce the NTAD
- Produced annually since 1995
- Contains data from throughout the USDOT and from several partner agencies
 - Transportation Networks
 - Transportation Facilities
 - Background Layers
- Distributed through the annual release of the NTAD DVD
 - Approximately 3,000 distributed each year
- All databases also available for download via the BTS web site
 - approximately 60,000 accesses/downloads per year

NTAD Data Format

- Started out with
 - ASCII Flat file
 - Available Technology
- Shapefile – used this in 2001
 - Has become a standard for spatial data
 - Esri opened the code to its shapefile and has made it the industry exchange standard.
 - All vendors can read and write shapefile format

NTAD Users

- Universities
- Schools
- State
- Local
- Federal Agencies
 - NSDI
 - Enhances Data products like HSIP
- Private

NTAD Transportation Networks

- National Highway Planning Network
- Highway Performance Monitoring System
- Freight Analysis Framework
- Hazardous Material Routes
- Rail Network
- Runway
- Transit Rail
- Waterway Network



NTAD Transportation Facilities

- Airports
- Alternative Fuel Stations
- AMTRAK Stations
- ATR & WIM
- Border Crossings
- Intermodal Transfer Facilities
- National Bridge Inventory
- Railroad Bridges
- Railroad Crossings

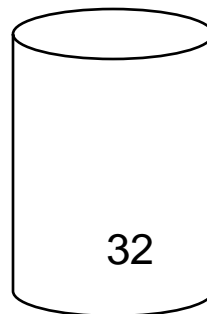
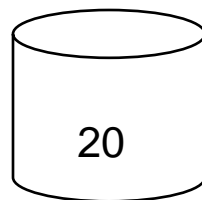


NTAD Background Layers

- Urbanized Boundaries
- Core Based Statistical Area
- Congressional
- State and County (Shorelines & Political)
- Hydrographic
- Military Bases
- MPO
- Parks

1995

2012



NTAD Then and Now

- 1995 – Oak Ridge
 - Poly 6
 - Line 5
 - Points 9
 - Total 20

- 2011 - BTS
 - Poly 12
 - Line 8
 - Points 12
 - Total 32

Contributors to the NTAD

- FHWA – Federal Highway Administration
- FRA – Federal Railroad Administration
- NHTSA – National Highway Traffic Safety Administration
- RITA – Research and Innovative Technology Administration
- FTA – Federal Transit Administration
- FAA – Federal Aviation Administration
- DOD – Department of Defense
- BOC – Bureau of the Census
- USACE – US Army Corp of Engineers
- EPA – Environmental Protection Agency
- DOI – Department of the Interior (Parks)

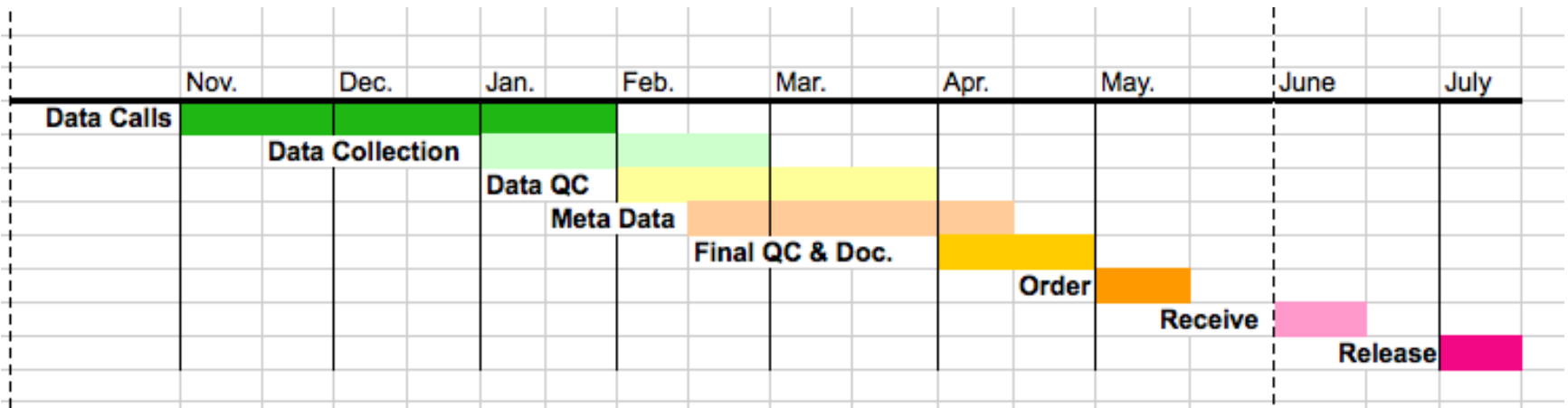


NTAD

- Each has their own
 - Maintenance Schedules
 - Priorities
 - Formats
 - Quality
 - Delivery Methods
- Some or all of may change each year



NTAD Time Lne



NTAD the Future

- We Will Continue
 - Annual Release
 - Esri UC
 - Shapefile Format
 - Metadata
 - FGDC to ISO
 - DVD
- Add
 - NTAD Online Data Viewer
 - Data Download function
- Stories

Thank you for your interest

www.bts.gov/

Questions

Comments

Mark Bradford

202.366.6810 - desk

202.557.4026 – cell

mark.bradford@dot.gov

