

Status of GOS for Transportation

Mark Bradford

March 30, 2004

Geospatial One Stop

Purpose of the project:

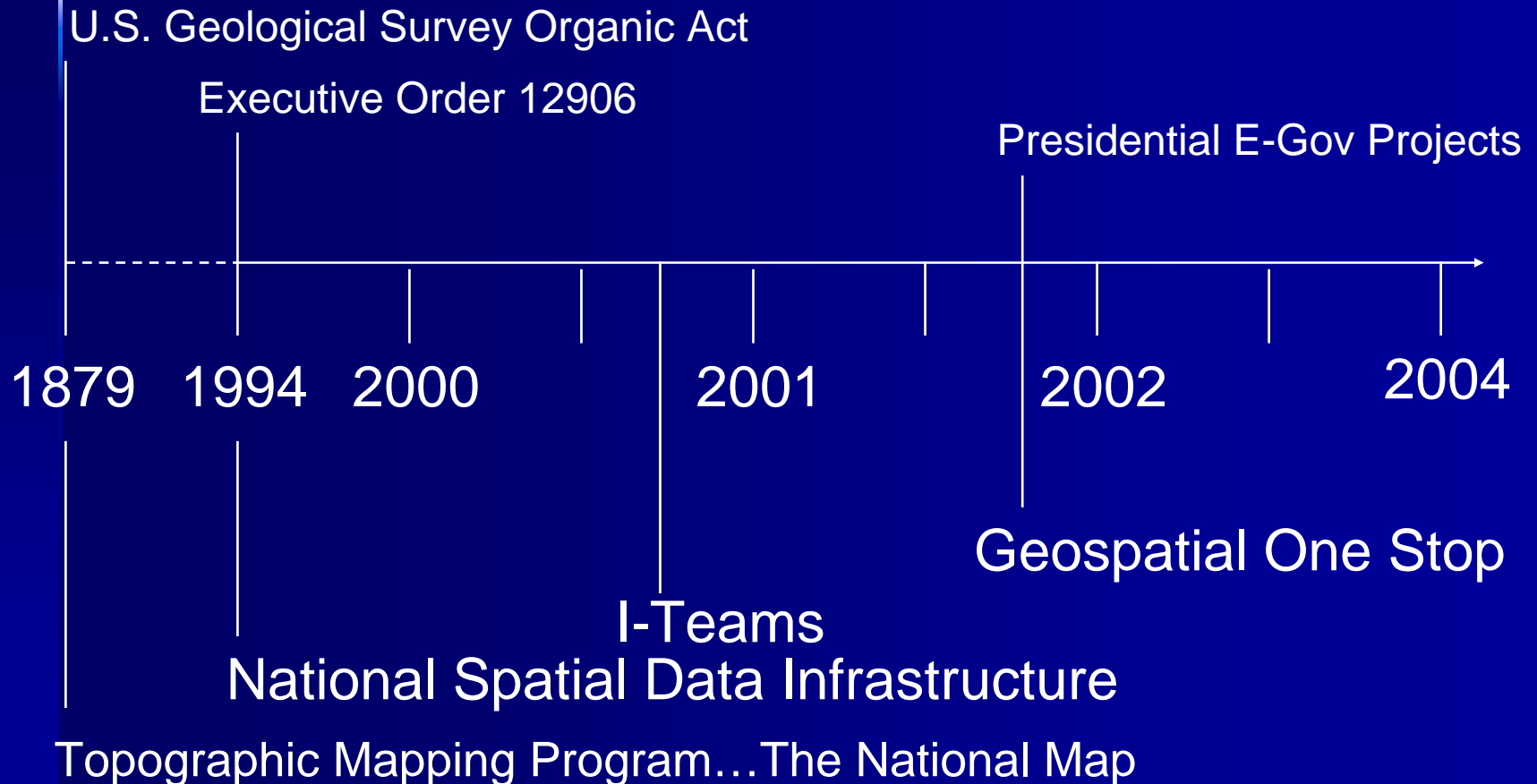
- Making it:
 - Easier
 - Faster
 - Cheaper

For all levels of government and the public to access geospatial information.

Geospatial One Stop

- Raises the visibility strategic value of geographic information.
- Increases federal agency accountability for the stewardship and sharing of geospatial resources.
- Establishes a collaborative model for directing an intergovernmental initiative.

A Timeline



INTRODUCTION

- Transportation one of 7 Framework Themes
 - DOT lead for Transportation
 - ◆ BTS assigned lead by DOT for the development of Transportation Standard
- Transportation Standard
 - Modes are similar, but different
 - Transportation composed of 5 modes
 - ◆ Road, Rail, Air, Transit, & Water (USACE)



WHAT'S BEEN DONE

- OMB required draft of the Road Standard September, 2002
- Developed GOS-TP, an application of the Road Standard Summer 2003
- All standards drafted, commented, and completed June 2003
- Transportation Standards Harmonized with each other July 2003
- Transportation Standard Harmonized with other GOS Framework Standards August 2003
- Moved portal outside DOT Firewall



CURRENT STATUS

- BTS is working to get more participation from USDOT
 - Made presentations to GOS-T modes, and several other interested modes
 - ◆ Purpose is to educate and inform what DOT has been doing to support and implement GOS
 - ◆ Get everyone on board and pushing in one direction
 - Only presented to lower levels
- Focus of effort should move from BTS to USDOT
 - Presentations to IRB and E-Gov Council
- BTS Funding
- We are providing monthly reports to the OCIO on status and progress related to the GOS initiative.
- Taking message to community Fed & Non-Fed



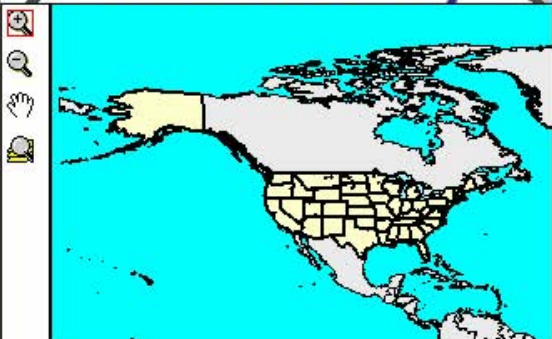
NEXT STEPS

- DOT is assessing its role in GOS
 - Senior Staff > IRB presentation
- Cookbook
 - How to participate
- Website
 - Will incorporate cookbook, and other
- Get Transportation community involved
 - Get the word out
 - AASHTO (IT) Web Conference

Geospatial One-Stop Transportation Pilot



Data Discovery Map Display



Available Feature Types

Available Servers For Extent:

You must zoom in before any servers will be available.

Add External Server

Geospatial One-Stop Transportation Pilot



Data Discovery Map Display



Available Feature Types

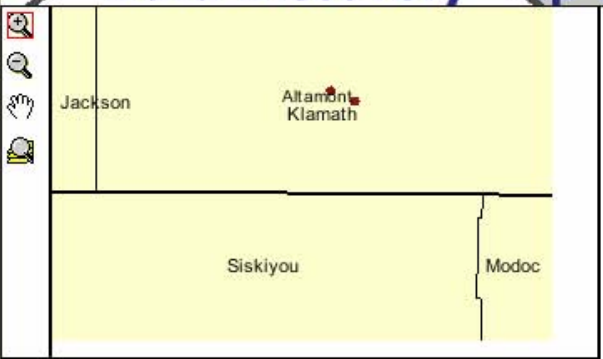
Available Servers For Extent:

Siskiyou County Node WFS-X

Geospatial One-Stop Transportation Pilot



Data Discovery Map Display



Available Feature Types

Navigation icons: Home, Search, Hand, Print

Map area (partially obscured by the map display)



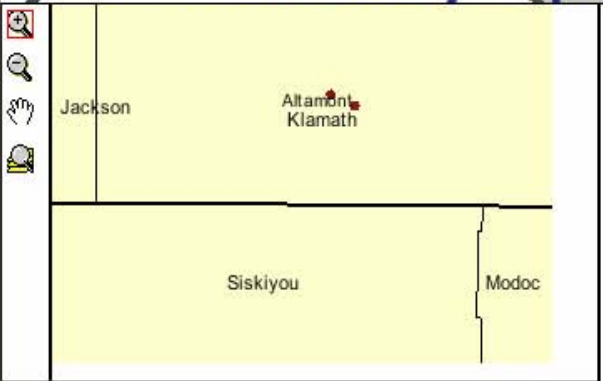
Address <http://jburka5421-2:8080/gostp/init.do>

Google Search Web 2434 blocked AutoFill Options

Geospatial One-Stop Transportation Pilot



Data Discovery Map Display



Update Map Contents

Available Feature Types

Siskiyou County Node WFS-X

- LinearReferencingElement [Describe Feature Types](#)
- PointAttributeEvent [Describe Feature Types](#)
- RoadPoint [Describe Feature Types](#)
- RoadSeg [Describe Feature Types](#)

Check All Clear All

Update Map Contents

Available Servers For Extent:

Siskiyou County Node WFS-X

Get Feature Types

Add External Server

Service:

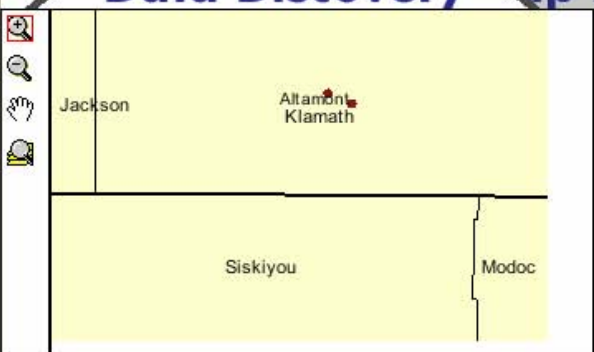
Name: Siskiyou County Node WFS-X

Description:

Geospatial One-Stop Transportation Pilot



Data Discovery Map Display



Update Map Contents

Available Feature Types

Siskiyou County Node WFS-X

- LinearReferencingElement [Describe Feature Types](#)
- PointAttributeEvent [Describe Feature Types](#)
- RoadPoint [Describe Feature Types](#)
- RoadSeg [Describe Feature Types](#)

Check All Clear All

Update Map Contents

Available Servers For Extent:

Siskiyou County Node WFS-X

Service:

Name: Siskiyou County Node WFS-X

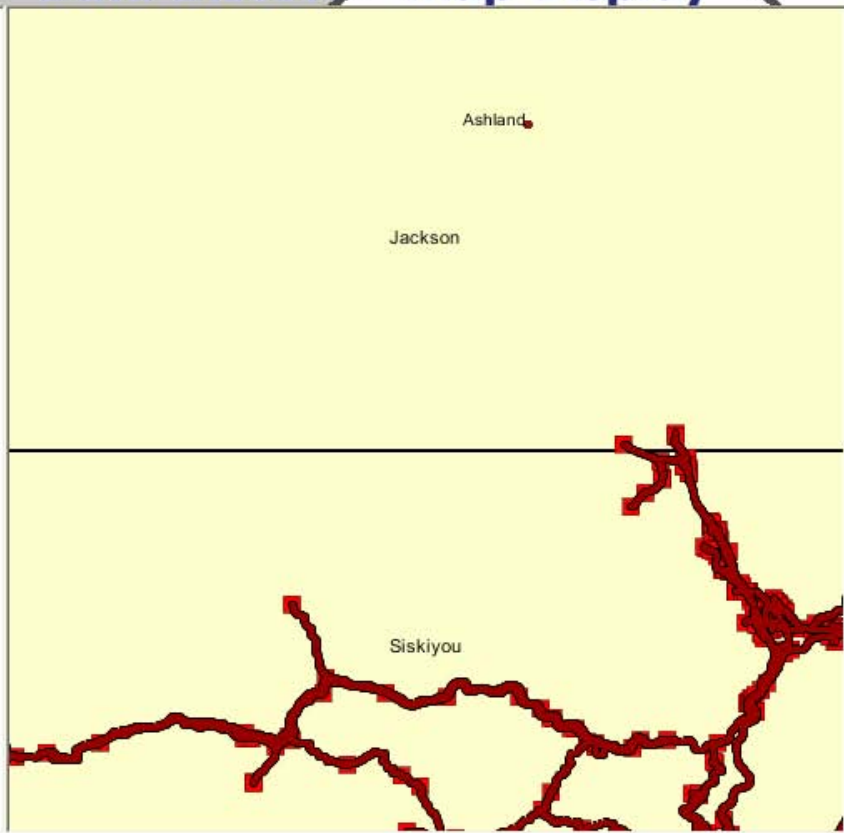
Description:

Polexis GOS-TP Siskiyou County Node Translating We

Geospatial One-Stop Transportation Pilot



Data Discover / Map Display



Legend

- <http://gos2.polexis.com/gos/tp>
- N** RoadSeg
- *** RoadPoint
- <http://giswebprime.bts.gov/ogc/wms/servlet/com.esri.ogc.wms.WMSServer>
- Cities
- Counties
- Lakes
- States
- Countries

Table of Contents

Geospatial One-Stop Transportation Pilot



Data Discovery Map Display

Ashland

Jackson

Siskiyou

Update Map Contents

Available Feature Types

Jackson County Node WFS-X

- LinearReferencingElement [Describe Feature Types](#)
- PointAttributeEvent [Describe Feature Types](#)
- RoadPath [Describe Feature Types](#)
- RoadPoint [Describe Feature Types](#)
- RoadSeg [Describe Feature Types](#)

Check All

Clear All

Update Map Contents

Available Servers For Extent:

Jackson County Node WFS-X

Get Feature Types

Add External Server

Service:

Name:

Jackson County Node WFS-X

Description:

Polexis GOS-TP Jackson County Node Translating Wel



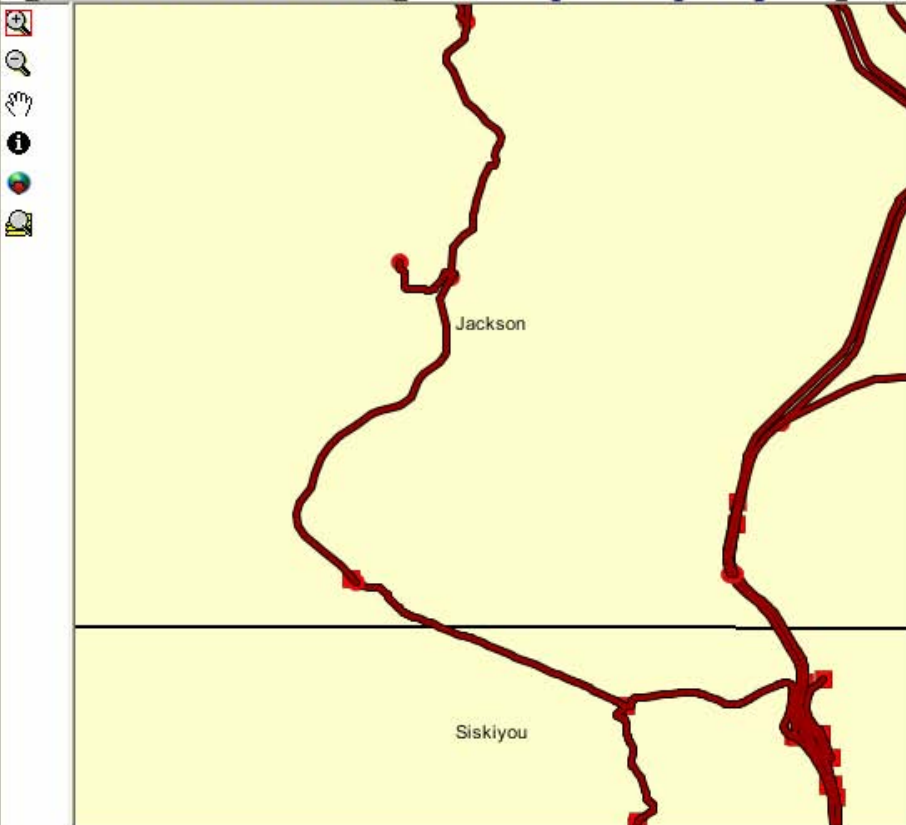
Address <http://burka5421-2:8080/gostp/ChangeView.do>

Google Search Web 2439 blocked AutoFill Options

Geospatial One-Stop Transportation Pilot



Data Discover Map Display



Legend

<http://gos1.polexis.com/gos/tp>

RoadSeg

RoadPoint

<http://gos2.polexis.com/gos/tp>

RoadSeg

* RoadPoint

<http://giswebprime.bts.gov/logcwm/servlet/com.esri.ogc.wms.WMSS>

Cities

Counties

Lakes

States

Countries

Table of Contents



Address <http://burka5421-2:8080/gostp/ChangeView.do>

Google Search Web 2439 blocked AutoFill Options

Geospatial One-Stop Transportation Pilot



Data Discover Map Display

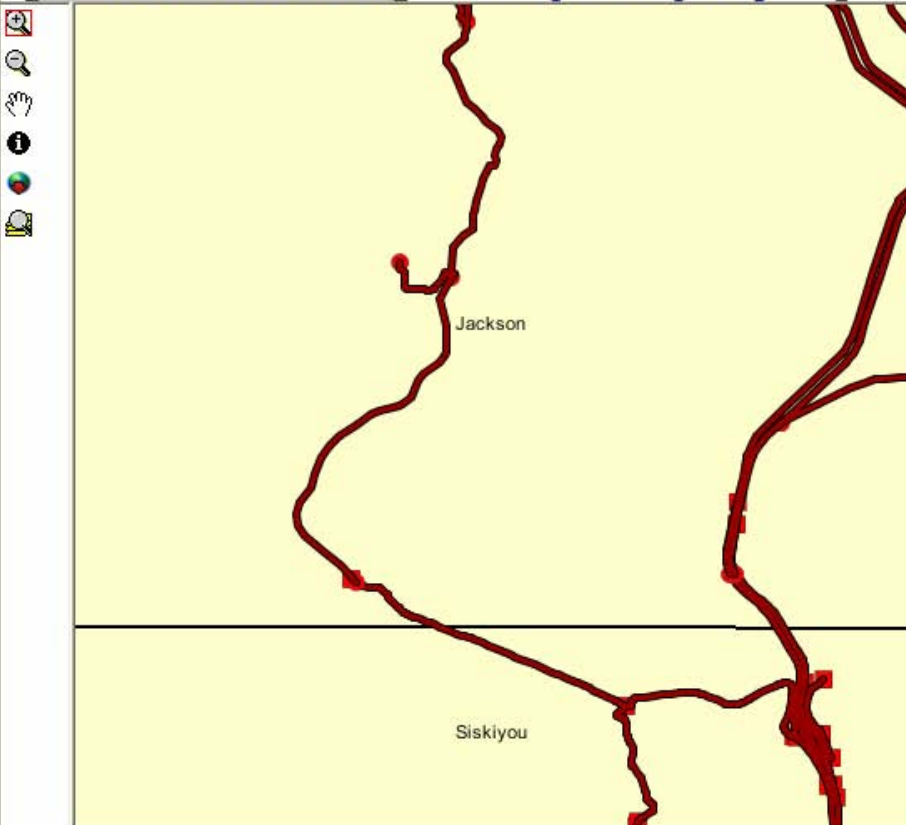


Table of Contents

<http://gos1.polexis.com/gos/tp>

RoadSeg

RoadPoint

<http://gos2.polexis.com/gos/tp>

RoadSeg

RoadPoint

<http://giswebprime.bts.gov/ogcwms/servlet/com.esri.ogc.wms.WMSServlet>

Cities

Counties

Lakes

States

Countries

Countries

Down Up

Legend Refresh

Contact Information

■ Carol Brandt

- BTS GIS PM
- carol.brandt@bts.gov
- 202.366.6662

■ Mark Bradford

- Geospatial Analyst
- mark.bradford@bts.gov
- 202.366.6810

